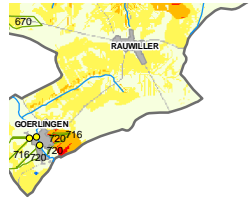






Sensibilité à l'érosion (maille 20 m)






Kochersberg et vallée de la Zorn



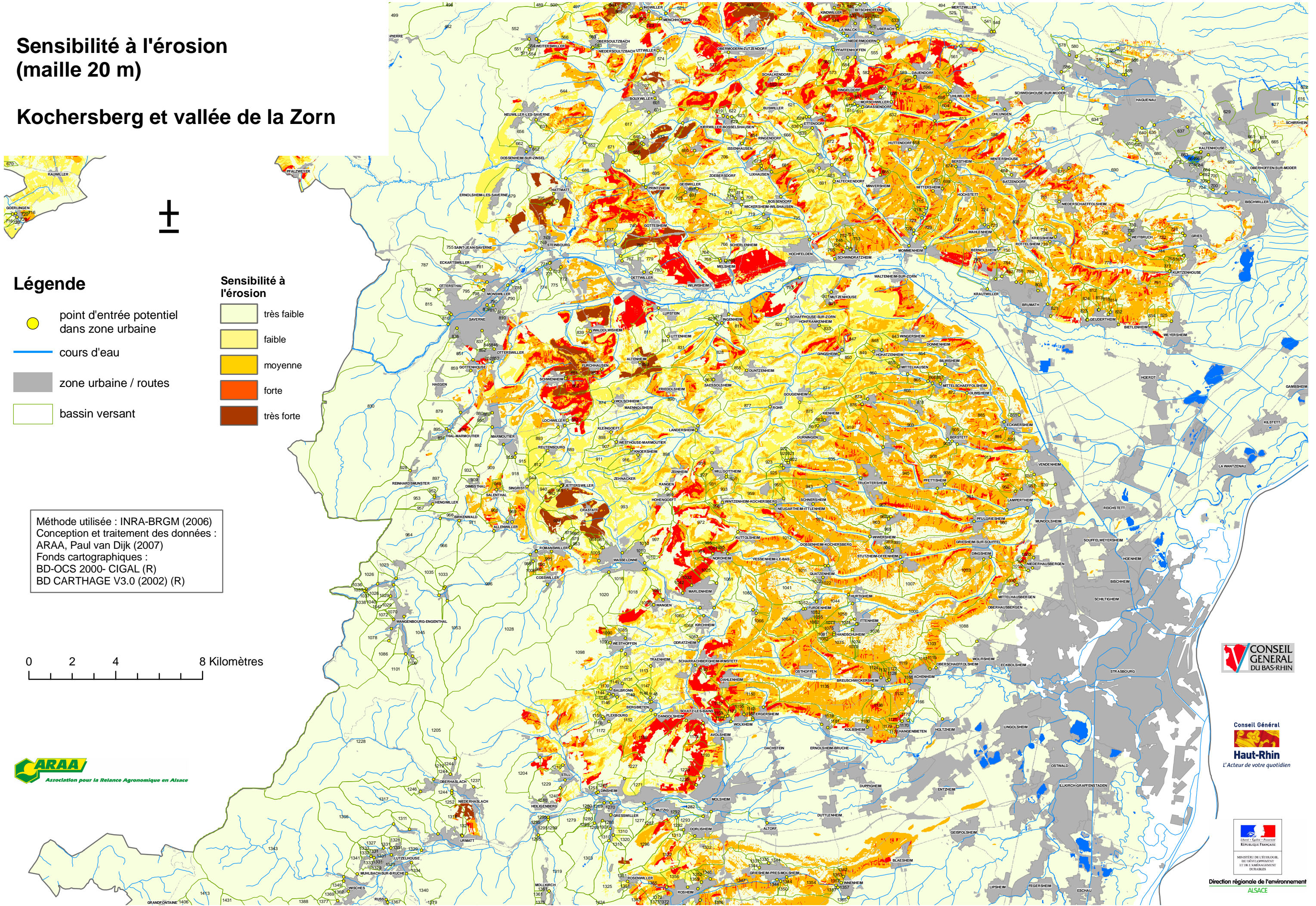
Légende

-  point d'entrée potentiel dans zone urbaine
-  cours d'eau
-  zone urbaine / routes
-  bassin versant

Sensibilité à l'érosion

-  très faible
-  faible
-  moyenne
-  forte
-  très forte

Méthode utilisée : INRA-BRGM (2006)
 Conception et traitement des données :
 ARAA, Paul van Dijk (2007)
 Fonds cartographiques :
 BD-OCS 2000- CIGAL (R)
 BD CARTHAGE V3.0 (2002) (R)



Direction régionale de l'environnement
ALSACE